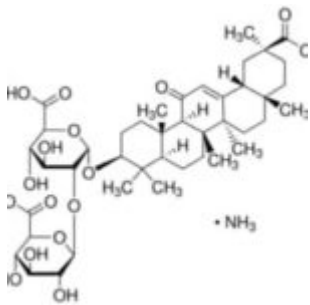




# Levanchímica

## Glycyrrhizate monoammonium EP 300 mg



Glycyrrhizate monoammonium EP 300 mg Sigma-Aldrich

SKU: G0460000

Categorie: [20 REAGENTI MERCK](#)

### Breve descrizione del prodotto :

Glycyrrhizate monoammonium, European Pharmacopoeia (EP) Reference Standard

### Informazioni aggiuntive:

- Dimensioni: N/A
- Peso: N/A
- CAS Number: 53956-04-0
- Molecular Formula: C<sub>42</sub>H<sub>62</sub>O<sub>16</sub>
- Purity Grade: European Pharmacopoeia (EP) Reference Standard
- URL  
Link: <https://www.sigmaaldrich.com/US/en/product/SIAL/G0460000?context=product>
- Image  
URL: [https://www.sigmaaldrich.com/content/dam/sigma-aldrich/structure8/187/mfcd00167400.eps/\\_jcr\\_content/renditions/mfcd00167400-medium.png](https://www.sigmaaldrich.com/content/dam/sigma-aldrich/structure8/187/mfcd00167400.eps/_jcr_content/renditions/mfcd00167400-medium.png)
- MSDS

Link: <https://www.sigmaaldrich.com/MSDS/MSDS/DisplayMSDSPage.do?country=DE&language=EN&productNumber=G0460000&brand=SIAL>

- Molecular Weight: 839.96
- Shipped on ICE/no ICE: STD
- SAP Pack with Pack Qty: 1X1EA
- Prodotto padre: G0460000