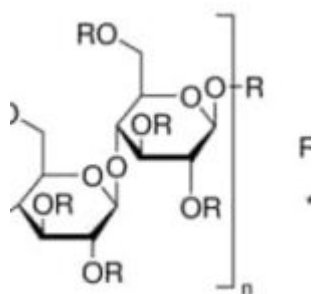


Ethyl cellulose viscosity 300 cP 100 g



Ethyl cellulose viscosity 300 cP 100 g Sigma-Aldrich

SKU: 200654-250G

Categorie: [20 REAGENTI MERCK](#)

Breve descrizione del prodotto :

Ethyl cellulose, viscosity 300 cP, 5 % in toluene/ethanol 80:20(lit.), extent of labeling: 48% ethoxyl

Informazioni aggiuntive:

- Dimensioni: N/A
- Peso: N/A
- CAS Number: 9004-57-3
- Purity Grade: viscosity 300 cP, 5 % in toluene/ethanol 80:20(lit.), extent of labeling: 48% ethoxyl
- URL
Link: <https://www.sigmaaldrich.com/US/en/product/ALDRICH/200654?context=product>
- Image
URL: https://www.sigmaaldrich.com/content/dam/sigma-aldrich/structure9/011/mfcd00131037.eps/_jcr_content/renditions/mfcd00131037-medium.png
- MSDS

Link: <https://www.sigmaaldrich.com/MSDS/MSDS/DisplayMSDSPage.do?country=DE&language=EN&productNumber=200654&brand=ALDRICH>

- Shipped on ICE/no ICE: STD
- SAP Pack with Pack Qty: 1X250G
- Prodotto padre: 200654-250G

Levanchmica Srl. - Viale Tommaso Columbo, 41 - 70132 BARI - Tel. 080 5662100 - info@levanchimica.it