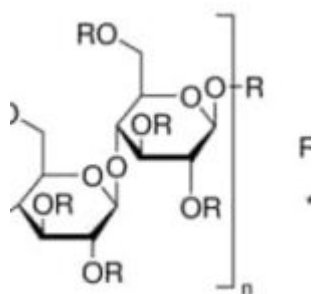


## Ethyl cellulose viscosity 22 cP 100 g



Ethyl cellulose viscosity 22 cP 100 g Sigma-Aldrich

SKU: 200697-250G

**Categorie:** [20 REAGENTI MERCK](#)

### Breve descrizione del prodotto :

Ethyl cellulose, viscosity 22 cP, 5 % in toluene/ethanol 80:20(lit.), extent of labeling: 48% ethoxyl

### Informazioni aggiuntive:

- Dimensioni: N/A
- Peso: N/A
- CAS Number: 9004-57-3
- Purity Grade: viscosity 22 cP, 5 % in toluene/ethanol 80:20(lit.), extent of labeling: 48% ethoxyl
- URL  
Link: <https://www.sigmaaldrich.com/US/en/product/ALDRICH/200697?context=product>
- Image  
URL: [https://www.sigmaaldrich.com/content/dam/sigma-aldrich/structure9/011/mfcd00131037.eps/\\_jcr\\_content/renditions/mfcd00131037-medium.png](https://www.sigmaaldrich.com/content/dam/sigma-aldrich/structure9/011/mfcd00131037.eps/_jcr_content/renditions/mfcd00131037-medium.png)
- MSDS

Link: <https://www.sigmaaldrich.com/MSDS/MSDS/DisplayMSDSPage.do?country=DE&language=EN&productNumber=200697&brand=ALDRICH>

- Shipped on ICE/no ICE: STD
- SAP Pack with Pack Qty: 1X250G
- Prodotto padre: 200697-250G

---

Levanchmica Srl. - Viale Tommaso Columbo, 41 - 70132 BARI - Tel. 080 5662100 - [info@levanchimica.it](mailto:info@levanchimica.it)