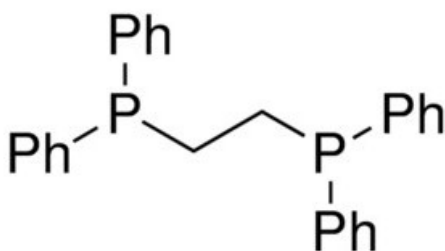


## Ethylenebis(diphenylphosphine), 97%

Ethylenebis(diphenylphosphine), 97%

### Identificativi Prodotto

Reference: 106496-10G



### Descrizione

### Dati Tecnici

CAS Number: 1663-45-2

Molecular Formula: C<sub>26</sub>H<sub>24</sub>P<sub>2</sub>

Purity Grade: 97%

Molecular Weight: 398.42

Shipped on ICE/no ICE: STD

SAP Pack with Pack Qty: 1X10G