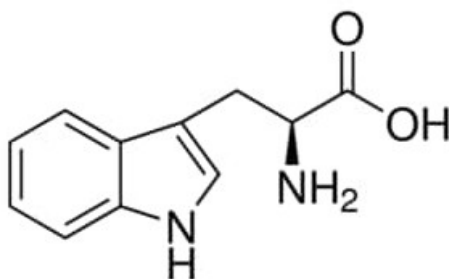


L-Tryptophan, from non-animal source, meets EP, JP, USP testing specifications, suitable for cell culture, 99.0-101.0%

L-Tryptophan, from non-animal source, meets EP, JP, USP testing specifications, suitable for cell culture, 99.0-101.0%

#### Identificativi Prodotto

Reference: T8941-25G



#### Descrizione

#### Dati Tecnici

CAS Number: 73-22-3

Molecular Formula: C<sub>11</sub>H<sub>12</sub>N<sub>2</sub>O<sub>2</sub>

Purity Grade: from non-animal source, meets EP, JP, USP testing specifications, suitable for cell culture, 99.0-101.0%

Molecular Weight: 204.23

Shipped on ICE/no ICE: STD

SAP Pack with Pack Qty: 1X25G