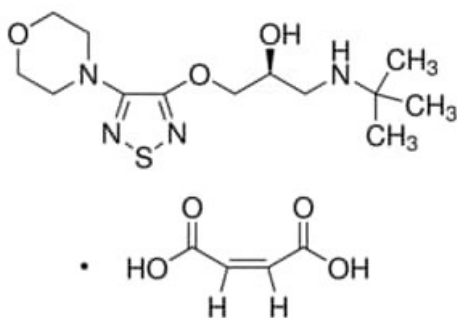


## Timolol maleate salt

Timolol maleate salt

### Identificativi Prodotto

Reference: T6394-250MG



### Descrizione

### Dati Tecnici

CAS Number: 26921-17-5

Molecular Formula: C<sub>13</sub>H<sub>24</sub>N<sub>4</sub>O<sub>3</sub>S

Purity Grade: >=98% (TLC), powder

Molecular Weight: 432.49

Shipped on ICE/no ICE: STD

SAP Pack with Pack Qty: 1X250MG