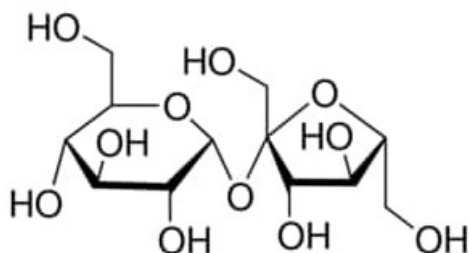


Sucrose, Grade II, suitable for plant cell culture

Sucrose, Grade II, suitable for plant cell culture

Identificativi Prodotto

Reference: S5391-1KG



Descrizione

Dati Tecnici

CAS Number: 57-50-1

Molecular Formula: C₁₂H₂₂O₁₁

Purity Grade: Grade II, suitable for plant cell culture

Molecular Weight: 342.30

Shipped on ICE/no ICE: STD

SAP Pack with Pack Qty: 1X1KG

Storage Temperature: room temp