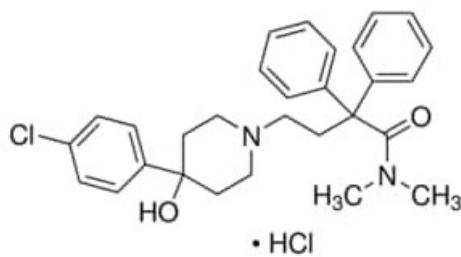


Loperamide hydrochloride, Pharmaceutical Secondary Standard. Certified Reference Material

Loperamide hydrochloride, Pharmaceutical
Secondary Standard. Certified Reference
Material

Identificativi Prodotto

Reference: PHR1162-1G



Descrizione

Dati Tecnici

CAS Number: 34552-83-5

Molecular Formula: C₂₉H₃₃ClN₂O₂

Purity Grade: Pharmaceutical Secondary Standard; Certified Reference Material

Molecular Weight: 513.50

Shipped on ICE/no ICE: STD

SAP Pack with Pack Qty: 1X1G