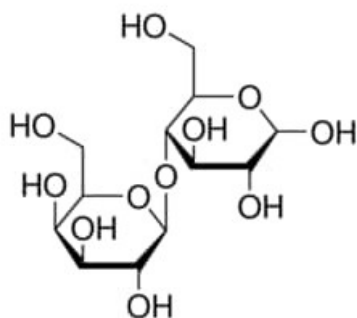


Lactose, Anhydrous, Pharmaceutical Secondary Standard. Certified Reference Material

Lactose, Anhydrous, Pharmaceutical Secondary Standard. Certified Reference Material

Identificativi Prodotto

Reference: PHR1025-1G



Descrizione

Dati Tecnici

CAS Number: 63-42-3

Molecular Formula: C₁₂H₂₂O₁₁

Purity Grade: Pharmaceutical Secondary Standard; Certified Reference Material

Molecular Weight: 342.30

Shipped on ICE/no ICE: STD

SAP Pack with Pack Qty: 1X1G