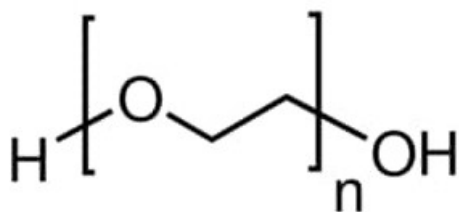


# Poly(ethylene glycol), average mol wt 8,000, powder

Poly(ethylene glycol), average mol wt 8,000, powder

## Identificativi Prodotto

Reference: P2139-1KG



## Descrizione

## Dati Tecnici

CAS Number: 25322-68-3

Purity Grade: average mol wt 8,000, powder

Shipped on ICE/no ICE: STD

SAP Pack with Pack Qty: 1X1KG