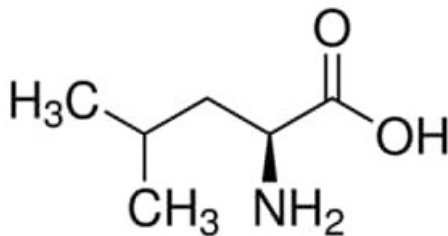


L-Leucine, from non-animal source, meets EP, JP, USP testing specifications, suitable for cell culture, 98.5-101.0%

L-Leucine, from non-animal source, meets EP, JP, USP testing specifications, suitable for cell culture, 98.5-101.0%

#### Identificativi Prodotto

Reference: L8912-25G



#### Descrizione

#### Dati Tecnici

CAS Number: 61-90-5

Molecular Formula: C<sub>6</sub>H<sub>13</sub>NO<sub>2</sub>

Purity Grade: from non-animal source, meets EP, JP, USP testing specifications, suitable for cell culture, 98.5-101.0%

Molecular Weight: 131.17

Shipped on ICE/no ICE: STD

SAP Pack with Pack Qty: 1X25G