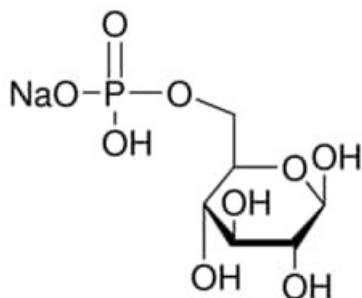


## D-Glucose 6-phosphate sodium salt, crystalline

D-Glucose 6-phosphate sodium salt, crystalline

### Identificativi Prodotto

Reference: G7879-500MG



### Descrizione

### Dati Tecnici

CAS Number: 54010-71-8

Molecular Formula: C<sub>6</sub>H<sub>12</sub>NaO<sub>9</sub>P

Purity Grade: crystalline

Molecular Weight: 282.12

Shipped on ICE/no ICE: STD

SAP Pack with Pack Qty: 1X500MG