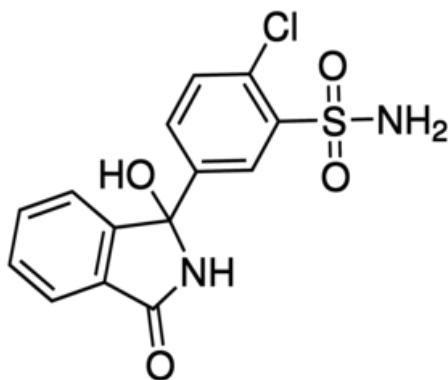


Chlorthalidone, European Pharmacopoeia (EP) Reference Standard

Chlorthalidone, European Pharmacopoeia (EP)
Reference Standard

Identificativi Prodotto

Reference: C1950000



Descrizione

Dati Tecnici

CAS Number: 77-36-1

Molecular Formula: C₁₄H₁₁ClN₂O₄S

Purity Grade: European Pharmacopoeia (EP) Reference Standard

Molecular Weight: 338.77

Shipped on ICE/no ICE: STD

SAP Pack with Pack Qty: 1X1EA