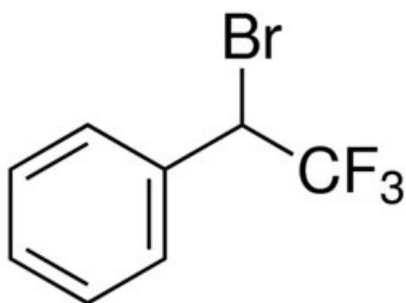


(1-Bromo-2,2,2-trifluoroethyl)benzene, 95%

(1-Bromo-2,2,2-trifluoroethyl)benzene, 95%

Identificativi Prodotto

Reference: 737240-500MG



Descrizione

Dati Tecnici

CAS Number: 434-42-4

Molecular Formula: C₈H₆BrF₃

Purity Grade: 95%

Molecular Weight: 239.03

Shipped on ICE/no ICE: STD

SAP Pack with Pack Qty: 1X500MG