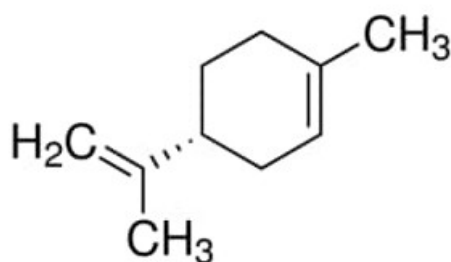


(R)-(+)-Limonene, technical, ~90% (sum of enantiomers, GC)

(R)-(+)-Limonene, technical, ~90% (sum of enantiomers, GC)

Identificativi Prodotto

Reference: 62122-250ML-F



Descrizione

Dati Tecnici

CAS Number: 5989-27-5

Molecular Formula: CH₁₆

Purity Grade: technical, ~90% (sum of enantiomers, GC)

Molecular Weight: 136.23

Shipped on ICE/no ICE: STD

SAP Pack with Pack Qty: 1X250ML

Storage Temperature: 2-8C

