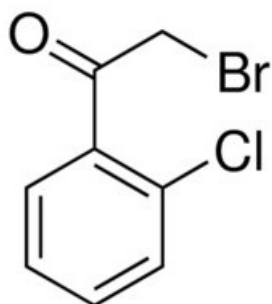


2-Bromo-2'-chloroacetophenone, 95%

2-Bromo-2'-chloroacetophenone, 95%

Identificativi Prodotto

Reference: 594482-1G



Descrizione

Dati Tecnici

CAS Number: 5000-66-8

Molecular Formula: C₈H₆BrClO

Purity Grade: 95%

Molecular Weight: 233.49

Shipped on ICE/no ICE: STD

SAP Pack with Pack Qty: 1X1G

Storage Temperature: 2-8C