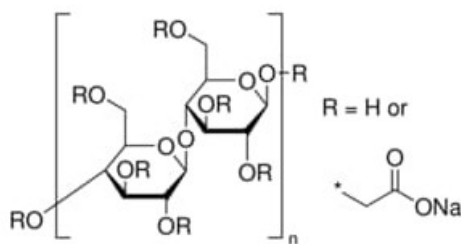


Sodium carboxymethyl cellulose, average Mw ~250,000, degree of substitution 0.7

Sodium carboxymethyl cellulose, average Mw ~250,000, degree of substitution 0.7

Identificativi Prodotto

Reference: 419311-100G



Descrizione

Dati Tecnici

CAS Number: 9004-32-4

Purity Grade: average Mw ~250,000, degree of substitution 0.7

Shipped on ICE/no ICE: STD

SAP Pack with Pack Qty: 1X100G