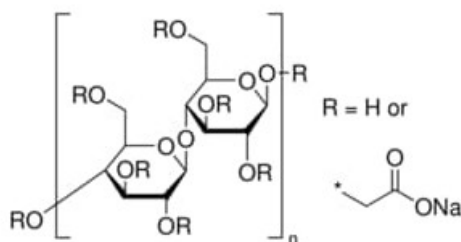


Sodium carboxymethyl cellulose, average Mw ~90,000

Sodium carboxymethyl cellulose, average Mw
~90,000

Identificativi Prodotto

Reference: 419273-1KG



Descrizione

Dati Tecnici

CAS Number: 9004-32-4
Purity Grade: average Mw ~90,000
Shipped on ICE/no ICE: STD
SAP Pack with Pack Qty: 1X1KG