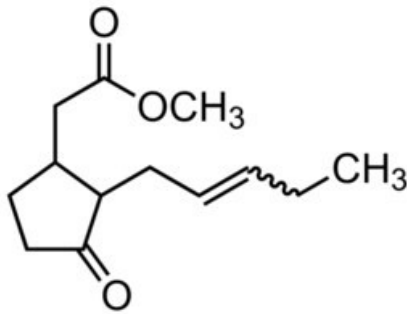


## Methyl jasmonate, 95%

Methyl jasmonate, 95%

### Identificativi Prodotto

Reference: 392707-25ML



### Descrizione

### Dati Tecnici

CAS Number: 39924-52-2

Molecular Formula: C<sub>13</sub>H<sub>20</sub>O<sub>3</sub>

Purity Grade: 95%

Molecular Weight: 224.30

Shipped on ICE/no ICE: STD

SAP Pack with Pack Qty: 1X25ML