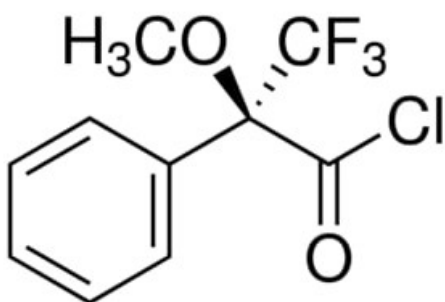


# (S)-(+)-alpha-Methoxy- alpha-(trifluoromethyl)phenylacetyl chloride, 99%

(S)-(+)-alpha-Methoxy-  
alpha-(trifluoromethyl)phenylacetyl chloride,  
99%

## Identificativi Prodotto

Reference: 369675-50MG



## Descrizione

## Dati Tecnici

CAS Number: 20445-33-4

Molecular Formula: CH<sub>8</sub>ClF<sub>3</sub>O<sub>2</sub>

Purity Grade: 99%

Molecular Weight: 252.62

Shipped on ICE/no ICE: STD

SAP Pack with Pack Qty: 1X50MG

Storage Temperature: -20C

