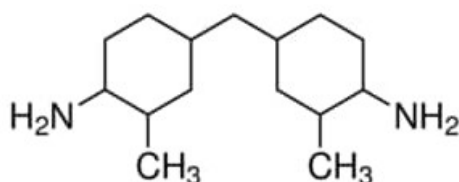


4,4'-Methylenebis(2-methylcyclohexylamine), mixture of isomers, 99%

4,4'-Methylenebis(2-methylcyclohexylamine),
mixture of isomers, 99%

Identificativi Prodotto

Reference: 369500-250ML



Descrizione

Dati Tecnici

CAS Number: 6864-37-5

Molecular Formula: C₁₅H₃N₂

Purity Grade: 99%

Molecular Weight: 238.41

Shipped on ICE/no ICE: STD

SAP Pack with Pack Qty: 1X250ML