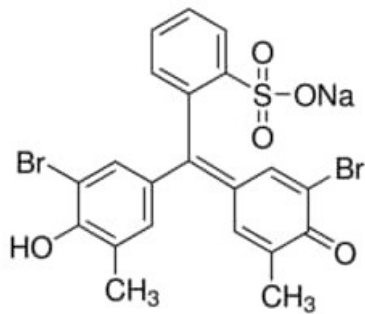


## Bromocresol Purple solution, 0.04 wt. % in H<sub>2</sub>O

Bromocresol Purple solution, 0.04 wt. % in H<sub>2</sub>O

### Identificativi Prodotto

Reference: 318736-100ML



### Descrizione

### Dati Tecnici

CAS Number: 62625-30-3

Molecular Formula: C<sub>21</sub>H<sub>15</sub>Br<sub>2</sub>NaO<sub>5</sub>S

Purity Grade: 0.04 wt. % in H<sub>2</sub>O

Molecular Weight: 562.20

Shipped on ICE/no ICE: STD

SAP Pack with Pack Qty: 1X100ML

Storage Temperature: room temp