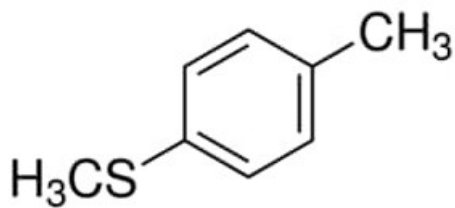


Methyl p-tolyl sulfide, 99%

Methyl p-tolyl sulfide, 99%

Identificativi Prodotto

Reference: 275956-5G



Descrizione

Dati Tecnici

CAS Number: 623-13-2

Molecular Formula: C₈H₈S

Purity Grade: 99%

Molecular Weight: 138.23

Shipped on ICE/no ICE: STD

SAP Pack with Pack Qty: 1X5G