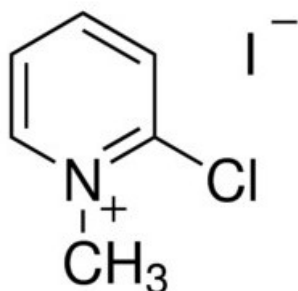


## 2-Chloro-1-methylpyridinium iodide, 97%

2-Chloro-1-methylpyridinium iodide, 97%

### Identificativi Prodotto

Reference: 198005-25G



### Descrizione

### Dati Tecnici

CAS Number: 14338-32-0

Molecular Formula: C<sub>6</sub>H<sub>7</sub>ClIN

Purity Grade: 97%

Molecular Weight: 255.48

Shipped on ICE/no ICE: STD

SAP Pack with Pack Qty: 1X25G