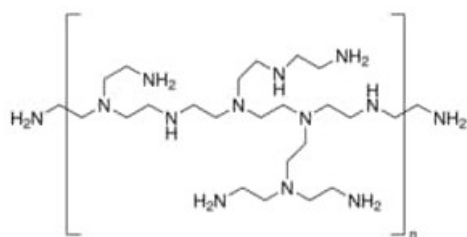


# Poly(ethyleneimine) solution, average Mn ~60,000 by GPC, average Mw ~750,000 by LS, 50 wt. % in H<sub>2</sub>O

Poly(ethyleneimine) solution, average Mn ~60,000 by GPC, average Mw ~750,000 by LS, 50 wt. % in H<sub>2</sub>O

## Identificativi Prodotto

Reference: 181978-100G



## Descrizione

## Dati Tecnici

CAS Number: 9002-98-6

Purity Grade: average Mn ~60,000 by GPC, average Mw ~750,000 by LS, 50 wt. % in H<sub>2</sub>O

Shipped on ICE/no ICE: STD

SAP Pack with Pack Qty: 1X100G