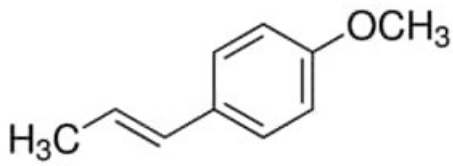


## trans-Anethole, 99%

trans-Anethole, 99%

### Identificativi Prodotto

Reference: 117870-100ML



### Descrizione

### Dati Tecnici

CAS Number: 4180-23-8

Molecular Formula: CH<sub>12</sub>O

Purity Grade: 99%

Molecular Weight: 148.20

Shipped on ICE/no ICE: STD

SAP Pack with Pack Qty: 1X100ML